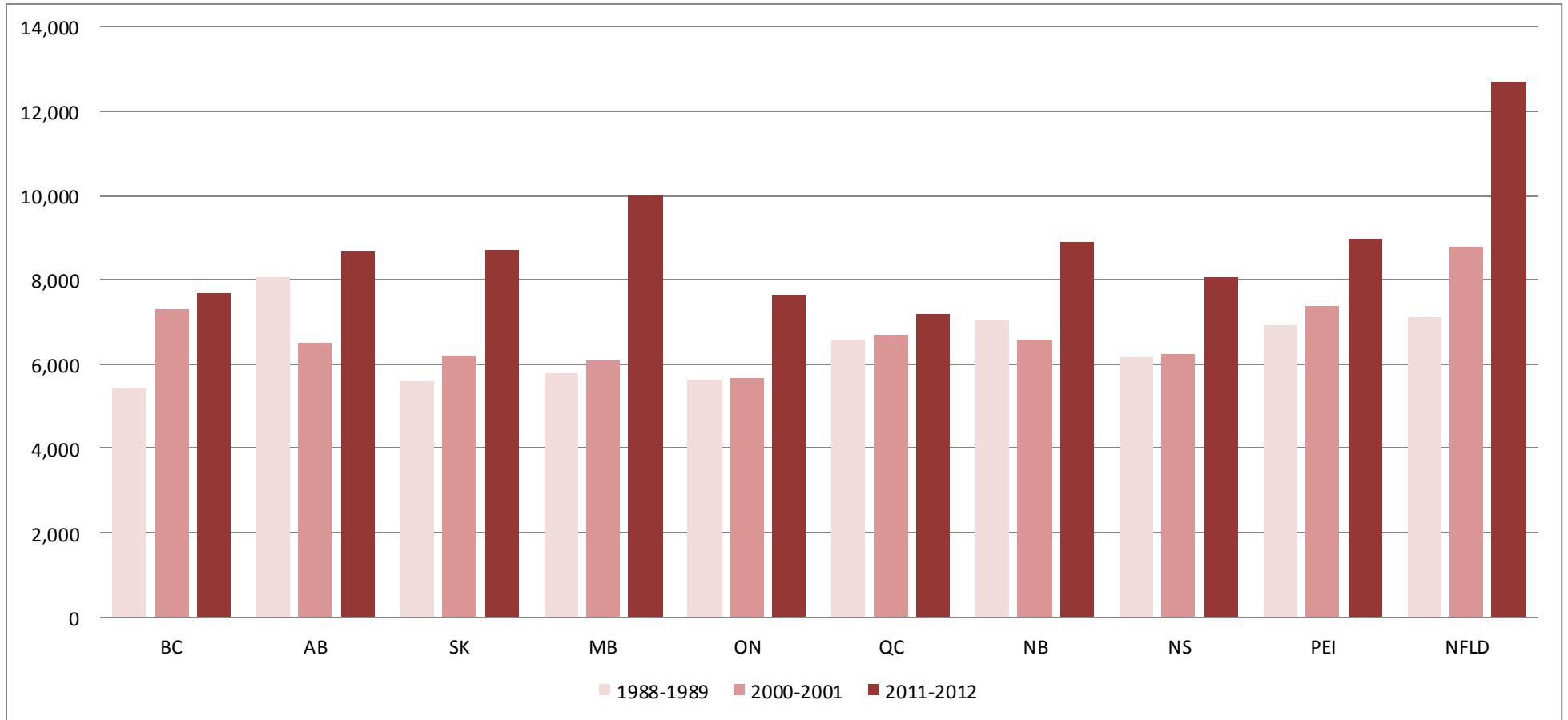


### Provincial Expenditures by Province and Year (Per Capita), Adjusted for Inflation, 1988-1989, 2000-2001, 2011-2012



Year	BC	AB	SK	MB	ON	QC	NB	NS	PEI	NFLD
1986-1987	5,537	8,750	6,051	5,575	5,240	6,549	6,982	5,790	6,326	6,747
1987-1988	5,416	8,109	5,526	5,842	5,273	6,706	7,187	5,864	6,496	7,038
1988-1989	5,453	8,051	5,607	5,799	5,634	6,596	7,054	6,179	6,935	7,109
1989-1990	5,362	7,848	6,021	5,741	5,339	6,260	6,678	6,133	6,974	7,183
1990-1991	5,675	7,880	6,385	5,790	5,617	6,503	6,813	6,061	7,116	7,294
1991-1992	5,951	7,503	5,885	5,719	5,905	6,583	6,716	5,887	7,059	7,044
1992-1993	5,953	7,843	5,873	5,816	6,040	6,705	6,790	6,051	7,133	7,081
1993-1994	5,976	7,246	5,728	5,548	5,921	6,621	6,674	5,961	7,078	6,919
1994-1995	6,153	6,484	5,864	5,578	5,977	6,789	6,793	5,925	7,107	8,310
1995-1996	5,897	5,897	5,725	5,540	6,020	6,603	6,649	5,889	6,613	8,017
1996-1997	5,813	5,612	5,609	5,412	5,661	6,229	6,570	5,566	6,655	7,940
1997-1998	5,572	5,744	5,534	5,592	5,513	6,262	6,518	5,771	6,497	8,106
1998-1999	7,160	5,820	5,953	5,711	5,518	6,501	6,753	6,315	6,782	8,384
1999-2000	7,113	6,193	6,080	6,112	5,930	6,508	6,884	6,368	7,077	8,352
2000-2001	7,309	6,500	6,206	6,094	5,673	6,680	6,596	6,238	7,384	8,799
2001-2002	7,620	6,839	6,507	6,034	5,590	6,671	6,913	6,253	7,334	8,886
2002-2003	7,316	6,497	6,409	6,049	5,610	6,732	7,150	6,175	7,269	9,149
2003-2004	7,056	6,602	6,621	7,678	5,793	6,701	7,287	6,471	7,724	9,652
2004-2005	6,884	7,083	6,751	7,768	6,047	6,852	7,300	6,760	7,857	9,203
2005-2006	7,323	7,593	7,222	8,194	6,261	6,916	7,607	6,986	7,911	9,731
2006-2007	7,436	7,905	7,617	8,121	6,378	7,062	7,881	7,337	8,023	9,640
2007-2008	7,717	8,347	7,576	8,801	6,694	7,156	8,287	7,780	8,377	10,205
2008-2009	7,646	8,944	8,952	9,054	6,595	7,236	8,687	7,980	8,714	10,936
2009-2010	7,820	8,732	8,575	9,206	7,730	7,205	9,057	8,243	9,794	12,584
2010-2011	7,774	8,862	9,012	9,380	7,866	7,291	9,324	7,937	9,585	12,642
2011-2012	7,692	8,669	8,725	9,996	7,659	7,196	8,889	8,074	8,981	12,693

**Sources:**

- Provincial Expenditures by Province and Year, 1986-1987 to 2011-2012
  - Federal Public Accounts, Fiscal Reference Tables